

MONTHLY MEMBERSHIP PROGRESS REPORT

LOCATION VIRGINIA

District 24 C

Results as of: 10/31/2020

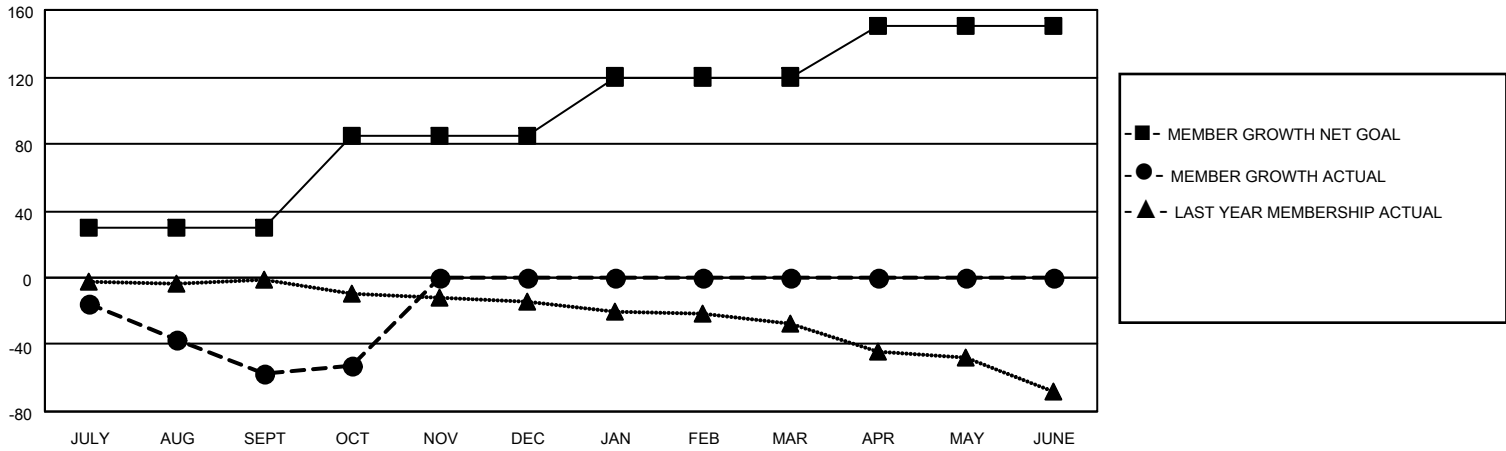
Clubs			
RESULTS FOR 2020-2021			
QUARTER	NEW CLUB GOAL	NEW CLUBS	DROPPED CLUBS
JULY/AUG/SEPT	0	0	3
OCT/NOV/DEC	1	0	0
JAN/FEB/MAR	1	0	0
APR/MAY/JUNE	0	0	0

Members			
RESULTS FOR 2020-2021			
QUARTER	MEMBER GROWTH NET GOAL	MEMBER GROWTH ACTUAL	DROPPED MEMBERS ACTUAL (including transfers)
JULY/AUG/SEPT	30	22	70
OCT/NOV/DEC	55	25	16
JAN/FEB/MAR	35	0	0
APR/MAY/JUNE	30	0	0

GOALS AND ACTUAL NEW CLUBS CUMULATIVE



GOALS AND ACTUAL MEMBERS CUMULATIVE



DROPPED CLUBS: 3	13 CLUBS OF 68 ADDED 1 OR MORE NEW MEMBERS	<u>GENDER DISTRIBUTION</u> MALE 971 (68.28%) FEMALE 451 (31.72%)
<u>DROPPED MEMBERS</u> DECEASED 8 CLUB CANCELLED 26 OTHER 52 <hr/> TOTAL 86	CLICK HERE FOR CUMULATIVE MEMBERSHIP DATA	TOTAL FAMILY UNIT MEMBERS 284 FAMILY MEMBERS PAYING HALF DUES 143